

The background of the slide features a photograph of a vineyard with rows of grapevines in the foreground and a small town in the distance. A semi-transparent map of California is overlaid on the right side of the image.

SGMA Updates and Alternative Plan

SCGA SGMA Subcommittee

July 20, 2016

Discussion Overview

- Questions being asked in Public Meetings
- State DWR Basin Boundary Modification (BBM) Public Workshop
- State Board Letter
- State DWR Best Management Practices (BMP) Website and Survey
- Approach to Alternative Submittal
- Delta Outreach

Questions being asked...

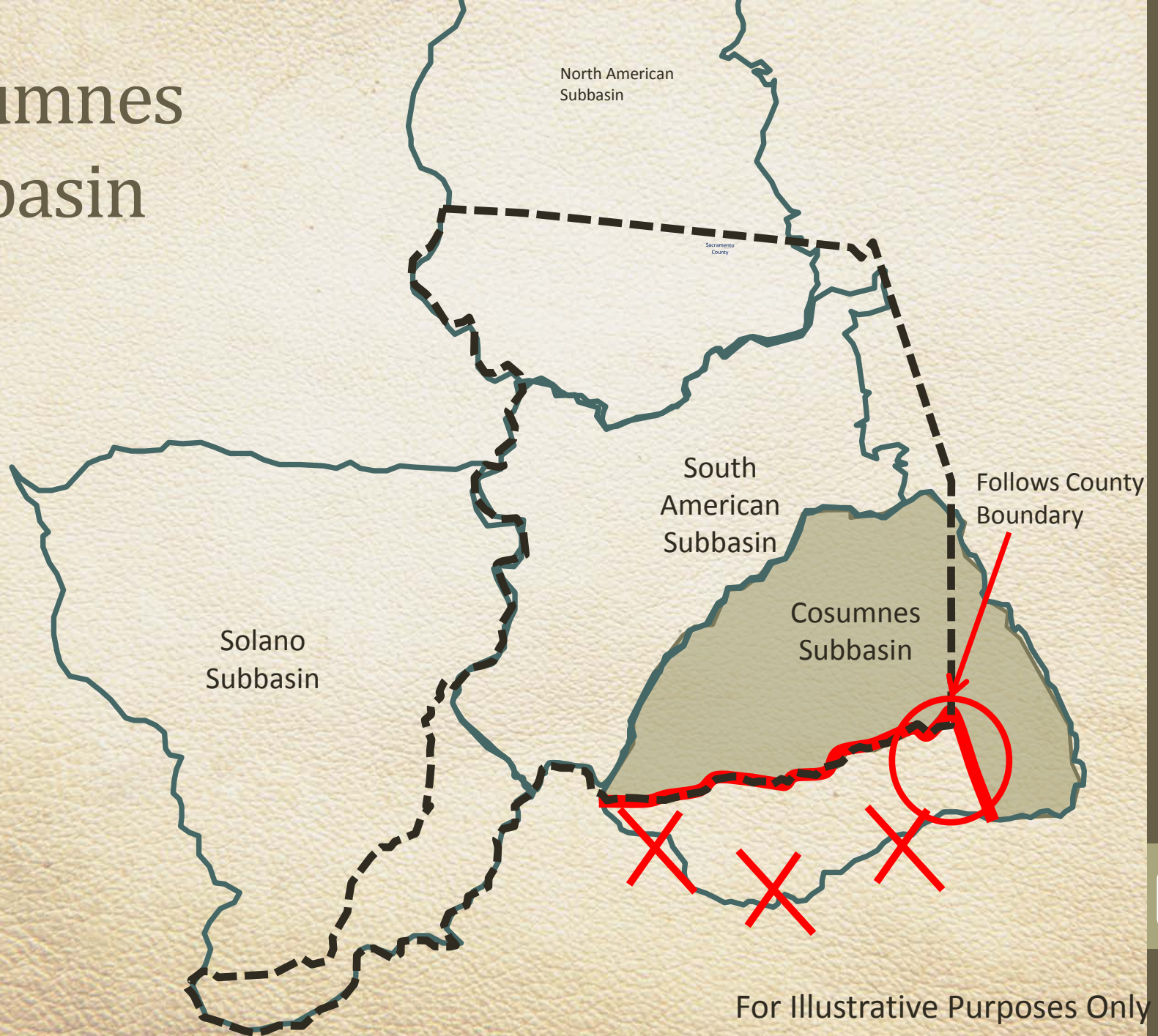
- What is an Alternative Submittal?
- What are the boundaries of the Alternative?
- Why do maps seem to show the Alternative going south of Cosumnes River?
- How can the Delta portion of the South American Subbasin be included in the Alternative?
- Is SCGA using a regional SGMA-compliant groundwater model (i.e., open source, public domain)?

State DWR BBM Stakeholder Meeting

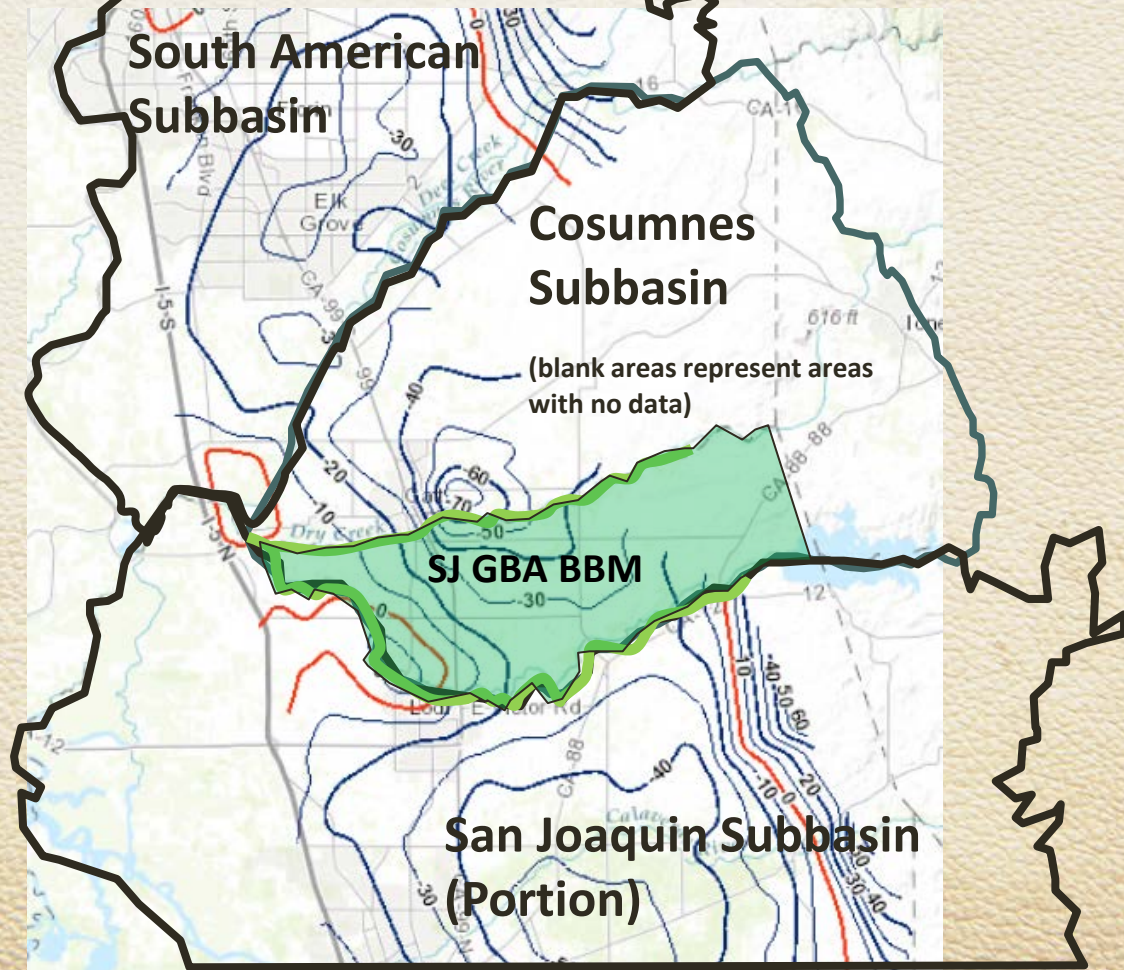
“DWR thinks they have it right, but wants to know if incorrect and to understand comments”

- New process requiring development of new review methods
 - Proposed basin can be managed sustainably
 - Would BBM limit sustainable management of adjacent basins
 - History of groundwater management in support of first two above.
- Looking for best coordination at local level
- Relying on local agency history

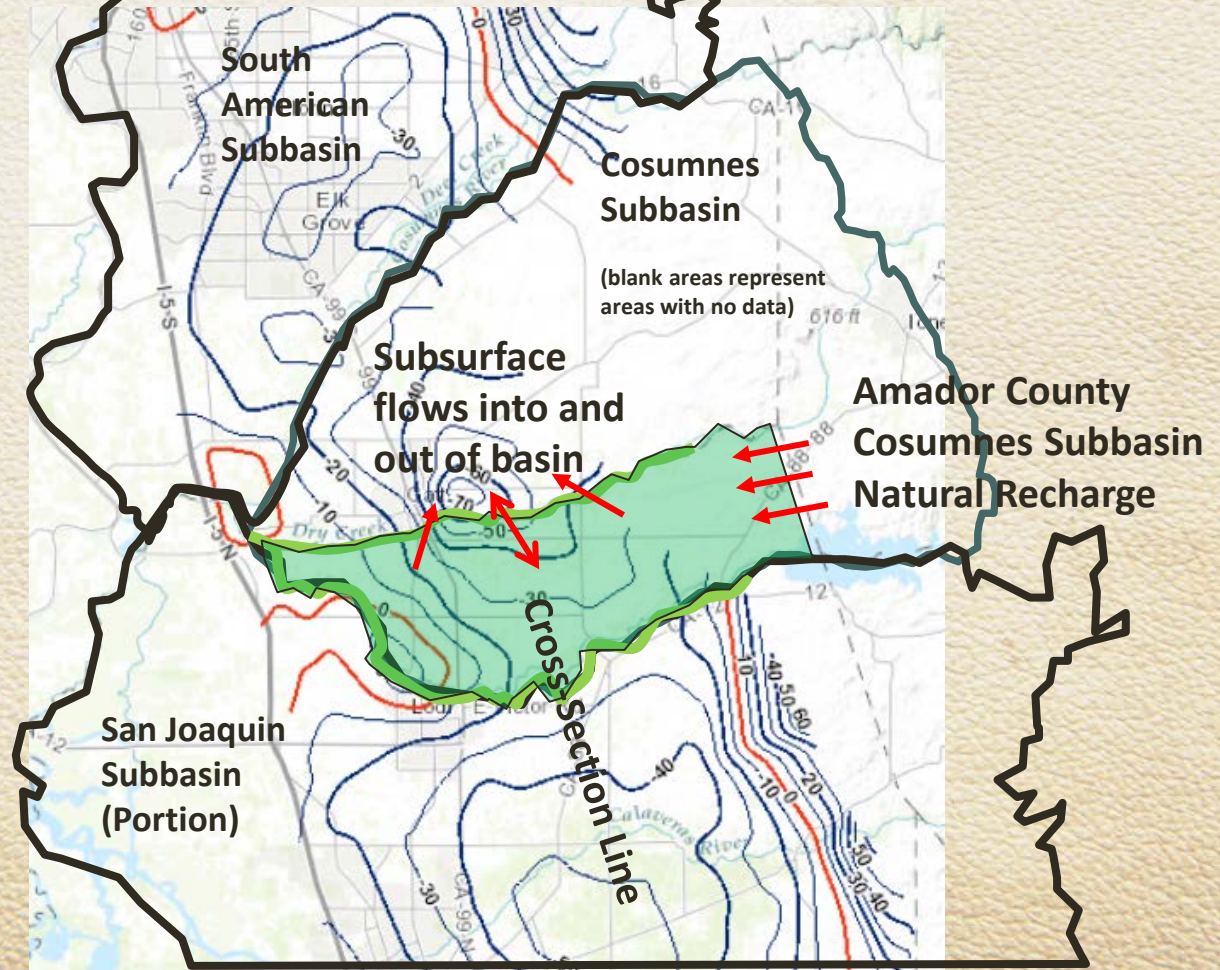
Cosumnes Subbasin



Groundwater Basins



Groundwater Basins



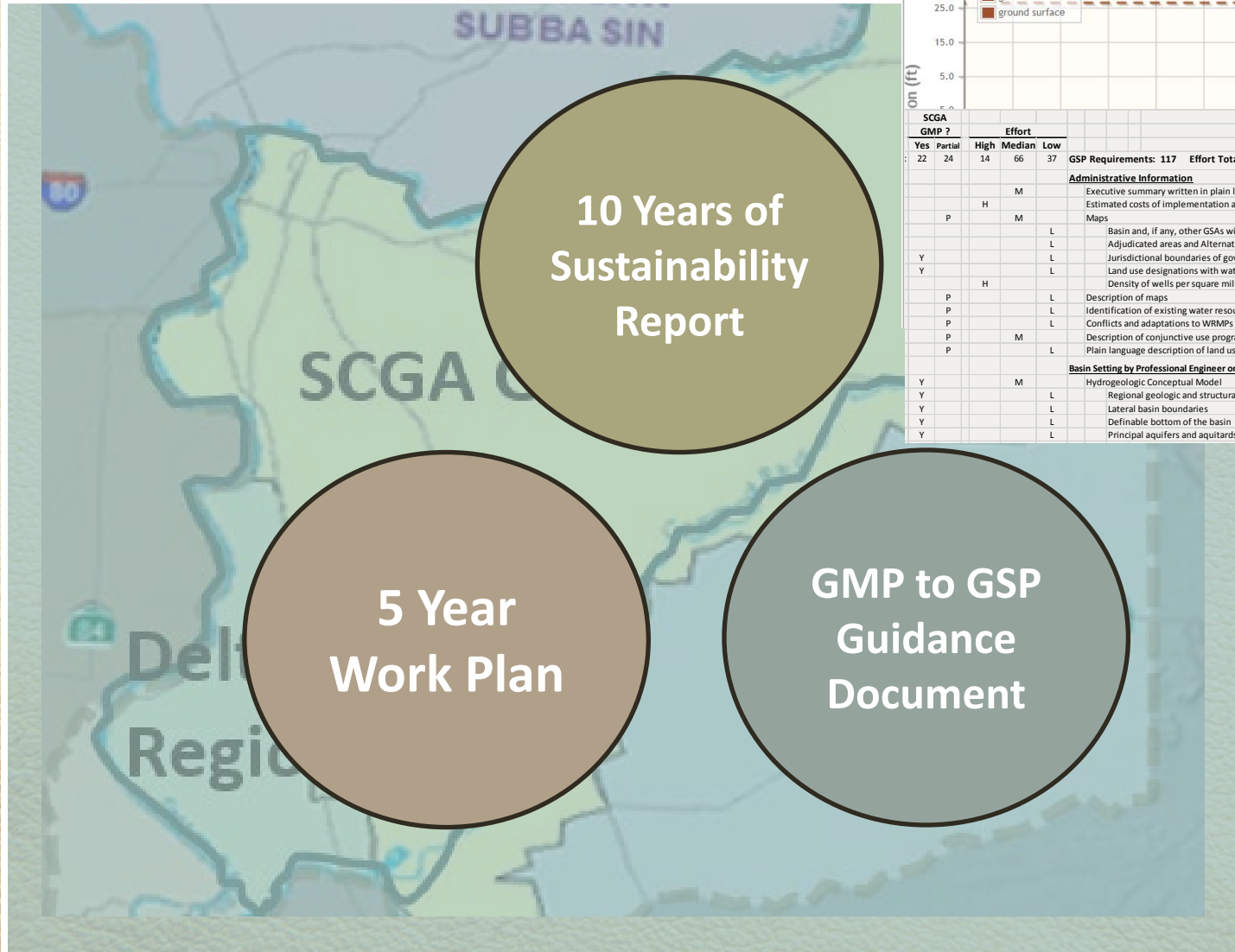
State DWR BBM Meeting

- Written rationale for decision not made available
- Denial based primarily on County request for additional time and SCGA's opposition
- California Water Commission Hearing (tomorrow) will present each modification
- 2018 Next Opportunity for BBM
 - SRCD BBM
 - State is looking for subbasin consolidations to improve coordination

SCGA as GSA

- SCGA filing for GSAs
- Acknowledge overlap conditions
- Consequence of not resolving overlap conditions
- State Board Role Relative to SGMA
 - State Board intervention is not planned to occur unless local management efforts are not successful
 - Failure to develop a GSA or GSP
 - Failure to adequately implement or inadequate GSP
 - Metering Requirements
 - Fees
 - De Minimus Extractors
 - Adjudication

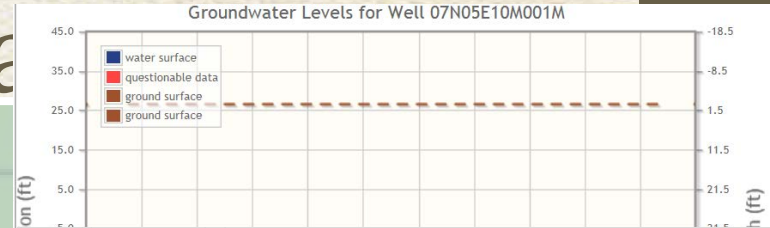
South American Subbasin Alternative Submittal



10 Years of Sustainability Report

5 Year Work Plan

GMP to GSP Guidance Document



SCGA		Effort				GSP Requirements: 117	Effort Total: 117	SCGA GMP Total: 46
Yes	Partial	High	Median	Low				
22	24	14	66	37	Administrative Information			
			M		Executive summary written in plain language			
		H			Estimated costs of implementation and source of funding			
		P	M		Maps			
			L		Basin and, if any, other GSAs within basin + adjacent basins			
			L		Adjudicated areas and Alternative Plan areas			
Y			L		Jurisdictional boundaries of governmental entities, including tribal lands, water agencies, and general plans			
Y			L		Land use designations with water use sectors and water source types			
		H			Density of wells per square mile, including 'agricultural, industrial, and domestic wells' and 'de minimis extractions'			
		P	L		Description of maps			
		P	L		Identification of existing water resource monitoring and management programs (WRMPs)			
		P	L		Conflicts and adaptations to WRMPs			
		P	M		Description of conjunctive use programs			
		P	L		Plain language description of land use and applicable general plans			
					Basin Setting by Professional Engineer or Geologist			
Y			M		Hydrogeologic Conceptual Model			
Y			L		Regional geologic and structural setting			
Y			L		Lateral basin boundaries			
Y			L		Definable bottom of the basin			
Y			L		Principal aquifers and aquitards			

State DWR Comments

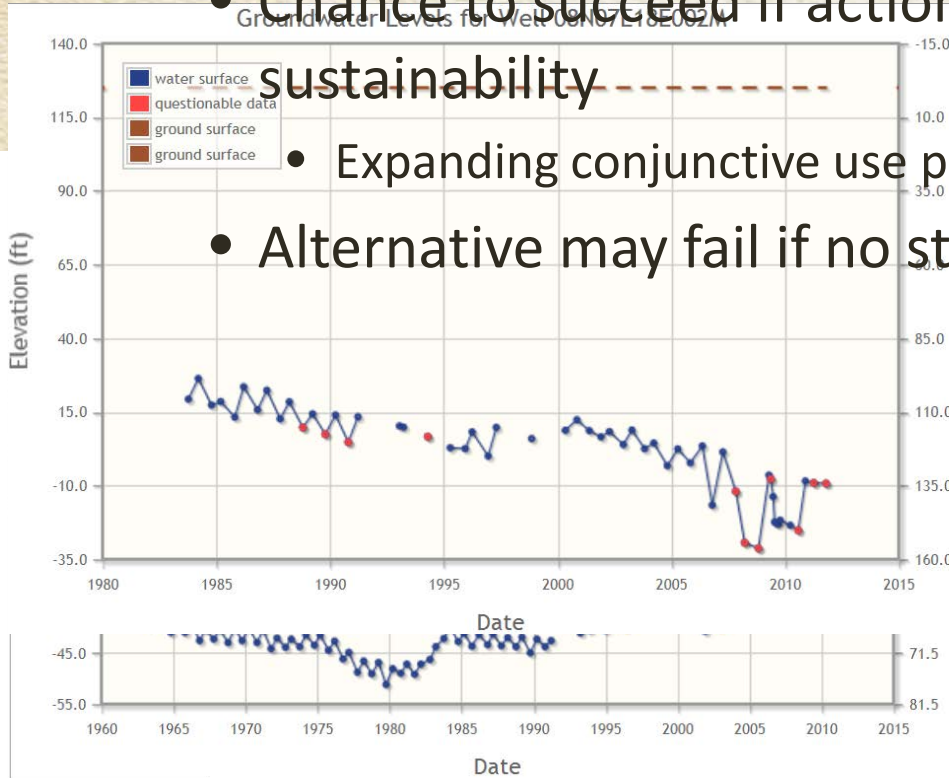
- Unique subbasin
- Recognized quality of SCGA's GMP
- Understanding of short timeframe
- State only gets one chance with Alternatives
- GMP-based Alternatives are difficult

10 Year Sustainability Analysis

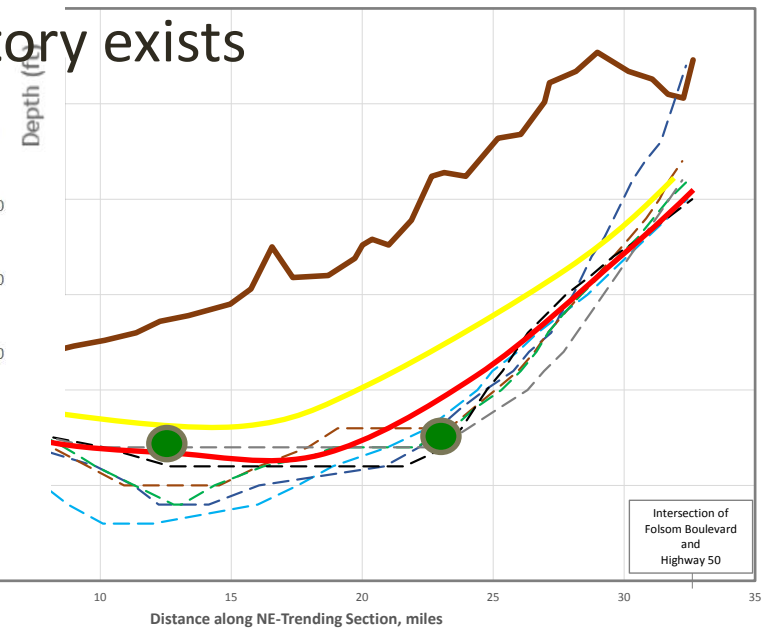
- Reporting of how Article 5 requirements have been satisfied for a 10 year period
- Technical Discussion of Sustainability
- Provide all available evidence of:
 - past sustainability
 - past and ongoing management actions
- Show that the recent drought conditions are within the regime of conjunctive use planning and sustainable yield of the WF and 2006 GMP
- Show that public interests and stakeholders were included in management actions

10 Year Sustainability Examples

- Water levels
 - Threshold Update using latest Water Forum Solution Model
 - Chance to succeed if actions taken are addressing sustainability
 - Expanding conjunctive use program
 - Alternative may fail if no story exists



Section of Potentiometric Surface
Sacramento County South Basin



Subsidence

- Subsidence
 - Very little data exists in South American Subbasin
 - Use of SGA monitoring
 - Area where improvements in monitoring will be necessary

Water Budget Challenges

- Water Budget
 - State Model vs. Local Model
 - Calibration model 1969 to 2011
 - Update urban data via 2015 UWMPs
 - Evaluate Ag and Ag-Res pumping via Basin Management Report (BMR)

Unknowns/Uncertainties

- DWR is struggling with review criteria
- Considered all of the public interests and stakeholders
 - GDEs are something new to groundwater management
- Evaluating Remediation Efforts
 - Balancing overlapping regulatory programs
 - Addressing impacts resulting from remediation

Chapters 2 and 3

- Existing GMP Comparison to Art 5 and 7
- 5-Year Work Plan and Recommendations
 - Data gaps
 - Future actions and improvements
 - Finance
 - Governance

Delta Outreach

- Needed SCGA Outreach Activities:
 - Provide notification letter to local agencies
 - Hold public meeting with Ag and Urban interests in the Delta
- Discussion of Assurances, including:
 - Delta can continue to plan for and implement SGMA
 - Future GSA and basin boundary modifications can take place
 - No costs associated with the west of I-5 portion of subbasin will be assessed unless conditions change in the Delta

Delta Meeting Scheduled

- Meeting with Reclamation Districts/LAND
- August 10, 2016 (7:00-9:00PM)
- North Delta Conservancy - Adjacent to PO (Corner of Riverside Ave and Primasing Ave) in Courtland

Alternative Actions

- Months of July/August
 - 10 Year Sustainability Analysis
 - Continue Dialogue with DWR
 - Outreach Meetings

BMP Website and Framework

- January 1, 2017 Deadline
- BMP Development Framework
 - Approach and timing for developing BMPs
 - Describes how interested parties, advisory groups, local agencies, etc. can participate
 - Schedule for initial set of BMPs

Best Management Practices

The **Sustainable Groundwater Management Act** (SGMA) directs the Department of Water Resources (DWR) to identify best management practices (BMPs) for the sustainable management of groundwater basins. Pursuant to Water Code § 10729(d):

- By January 1, 2017, DWR shall publish on its Internet Web site best management practices for the sustainable management of groundwater. (*Water Code § 10729(d)(1)*)
- DWR shall develop the best management practices through a public process involving one public meeting conducted at a location in northern California, one public meeting conducted at a location in the San Joaquin Valley, one public meeting conducted at a location in southern California, and one public meeting of the California Water Commission. (*Water Code § 10729(d)(2)*)

Approach for Developing Best Management Practices

DWR has established a multi-phased approach for developing BMPs to comply with the requirements described above, which are outlined in the **BMP Development Framework**. This approach includes the opportunity for interested parties to participate in a BMP Survey to help identify BMPs and establish the initial development prioritization. The BMP Survey will propose a number of potential BMPs that respondents can rank, and will ask if there are additional BMPs that respondents would like addressed.

How to Submit SGMA information to the Best Management Practices Survey

The BMP Survey can be accessed through the BMP Survey Website. Click the button below to continue.

Submit BMP Survey



California Department of Water Resources
Sustainable Groundwater Management Program

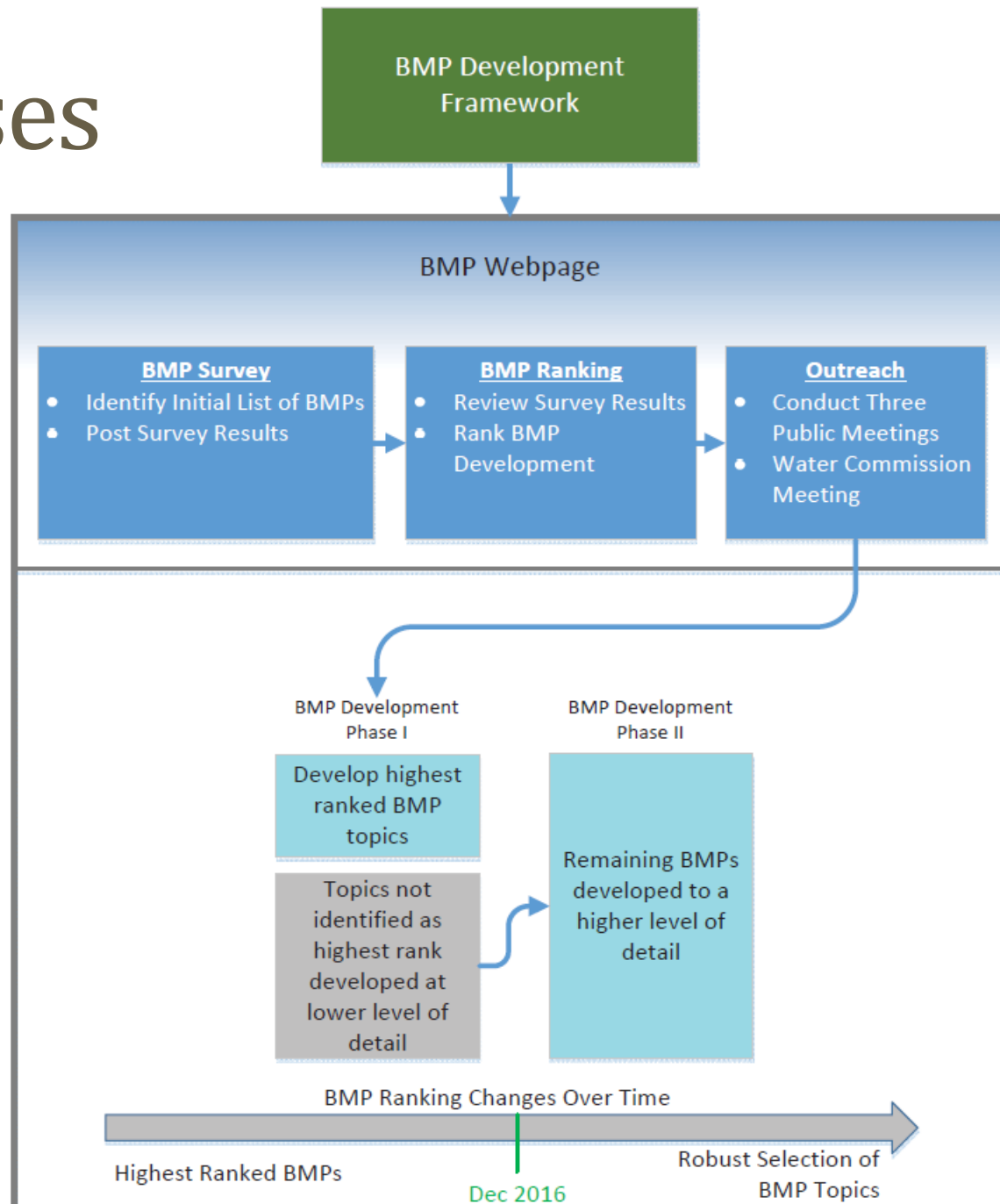
BMP Development Framework

The purpose of this Best Management Practices (BMP) Development Framework (Framework) is to outline DWR's approach and timing for developing and updating BMPs as part of the Sustainable Groundwater Management Program (SGMP). The Framework describes how interested parties, advisory groups, local agencies, and basin stakeholders can participate in the development of BMPs, and presents the schedule for developing the initial set of BMPs.

Two Types of BMPs

- BMPs included in GSP
Regulations that must be incorporated
- BMPs not included in GSP
Regulations developed as suggestions and guidance in developing GSP components

Two Phases



Due End of July BMP Survey



Department of Water Resources
SGM Sustainable Groundwater Management

To Begin **Best Management Practices Survey**

Before you start the survey, please read the [BMP Framework Document](#).

1

Provide your Contact Information

2

Choose up to five Best Management Practices (BMP)

3

Have additional BMPs?
Provide one or two additional BMP(s) of your choice

Contact Information

* Entity Type

Select an Option

* Entity Name

Search by name or enter new...

* Your Name

eg. John Doe

Your Title (if applicable)

* Email

eg. john@doe.com

* Office Phone


eg. (999) 999-9999 ext. 9999

BMP Web Page

- <http://water.ca.gov/groundwater/sgm/bmps.cfm>
- *BMPs to be posted as they are developed*
- *Continuously accessible throughout process*
- *Allows for transparency between interested parties*

Alternative Plan Schedule

- Submittal Schedule to January 1, 2017

- 7-month time frame June December
- 4 months for draft 
- 1 month review – October 
- 1 month finalization – November 
- Public Hearing and Adoption 
- Submittal to DWR 

Actions

- DWR Meeting to Discuss Approach
- Delta Coordination and Outreach
- Develop Notice of Preparation for July Board Hearing
- Alternative Plan Preparation

Questions?

Agreement on Shared Costs/Benefits

